

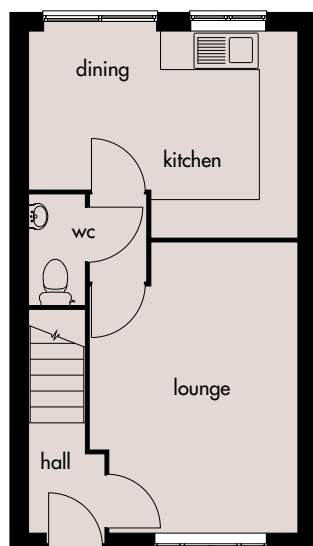
# Whitworth 'W'

*Setting the  
standard...*



## **A three bedroomed detached house.**

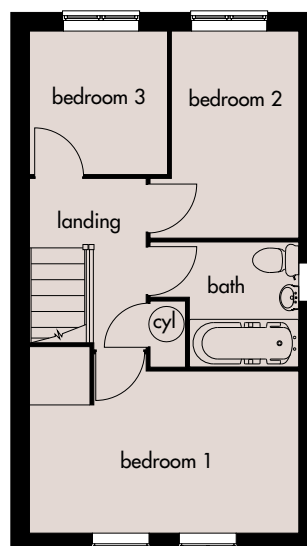
An elegantly designed home, including entrance hall, lounge, dining/kitchen and bathroom.



### **Ground Floor**

Lounge: 4550mm x 3250mm(max)  
14'11" x 10'7"(max)

Kitchen/Dining: 4225mm x 3240mm(max)  
13'10" x 10'7"(max)



### **First Floor**

Bedroom 1: 4225mm x 2540mm(max)  
13'10" x 8'4"(max)

Bedroom 2: 2235mm x 2165mm  
7'3" x 7'1"

Bedroom 3: 3240mm x 2000mm  
10'7" x 6'6"

Broseley Homes Limited, Investor House,  
Colima Ave, Sunderland Enterprise Park,  
Tyne & Wear SR5 3XB  
Tel: 0191 5370980  
[www.broseley-homes.co.uk](http://www.broseley-homes.co.uk)



Type 366W (13-01-06)

Broseley Homes Limited, Falcon House,  
Preston Farm Park,  
Stockton-on-Tees TS17 3TS  
Tel: 01642 499700  
[www.broseley-homes.co.uk](http://www.broseley-homes.co.uk)