

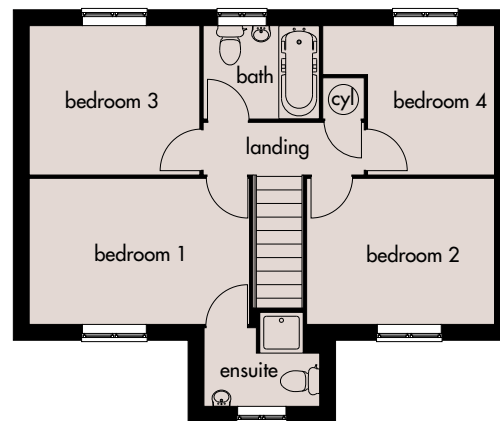
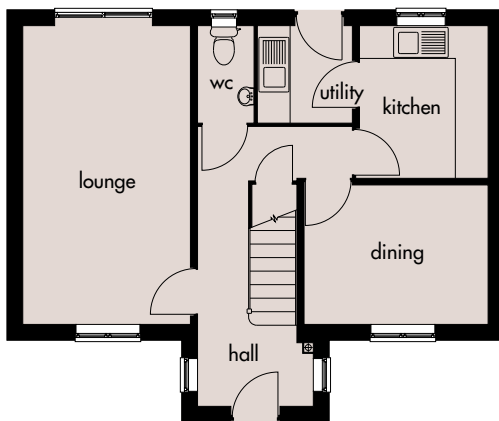
# Vulcan

*Designs for  
living...*



## A four bedroomed detached house.

An elegantly designed home, including entrance hall, downstairs cloakroom, lounge, dining room, kitchen, utility, bathroom and en-suite to master bedroom.



### Ground Floor

Lounge: 5450mm x 3050mm  
17'10" x 10'0"

Dining: 3350mm x 2525mm  
10'11" x 8'3"

Kitchen: 2775mm x 2335mm  
9'1" x 7'7"

Utility: 1785mm x 1725mm  
5'10" x 5'7"

### First Floor

Bedroom 1: 3940mm x 2630mm  
12'11" x 8'7"

Bedroom 2: 3395mm x 2630mm  
11'1" x 8'7"

Bedroom 3: 3030mm x 2720mm  
9'11" x 8'11"

Bedroom 4: 3100mm x 2720mm  
10'2" x 8'11"

Ensuite: 2100mm x 1390mm(max)  
6'10" x 4'6"(max)

Broseley Homes Limited, Investor House,  
Colima Ave, Sunderland Enterprise Park,  
Tyne & Wear SR5 3XB  
Tel: 0191 5370980  
[www.broseley-homes.co.uk](http://www.broseley-homes.co.uk)



Broseley Homes Limited, Falcon House,  
Preston Farm Park,  
Stockton-on-Tees TS17 3TS  
Tel: 01642 499700  
[www.broseley-homes.co.uk](http://www.broseley-homes.co.uk)

Type 409 (13-01-06)