

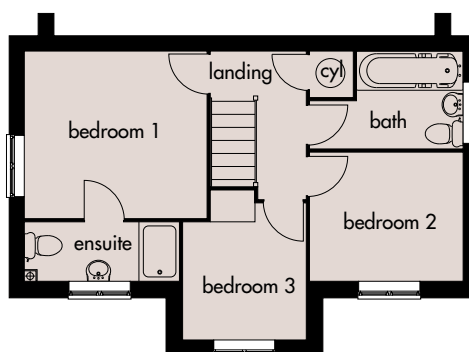
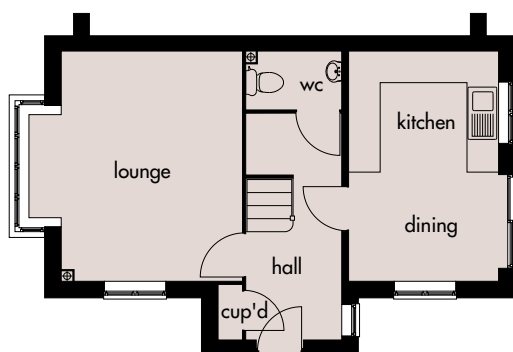
Tornado

Building the future...



A three bedroom semi-detached house.

An elegantly designed home, including entrance hall, downstairs cloakroom, lounge, dining/kitchen, en-suite to master bedroom and family bathroom.



Ground Floor

Lounge: 4570mm x 3790mm(max)
14'11" x 12'5"(max)

Dining/Kitchen: 4570mm x 2600mm
14'11" x 8'6"

First Floor

Bedroom 1: 3300mm x 3170mm
10'9" x 10'4"

Bedroom 2: 2650mm x 2420mm
8'8" x 7'11"

Bedroom 3: 2330mm x 2720mm(max)
7'7" x 8'11"(max)

Ensuite: 2650mm x 1165mm
8'8" x 3'9"

Broseley Homes Limited, Investor House,
Colima Ave, Sunderland Enterprise Park,
Tyne & Wear SR5 3XB
Tel: 0191 5370980
www.broseley-homes.co.uk



Broseley Homes Limited, Falcon House,
Preston Farm Park,
Stockton-on-Tees TS17 3TS
Tel: 01642 499700
www.broseley-homes.co.uk

Type 381 (13-01-06)