

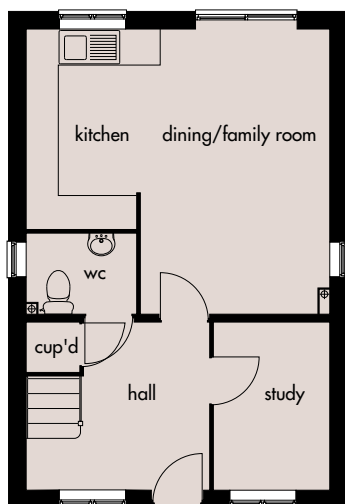
# Shackleton

*Quality with style...*



## A four bedroomed detached or mews house.

An elegantly designed home, including entrance hall, downstairs cloakroom, study, lounge, dining room, kitchen, bathroom and en-suite to master bedroom.

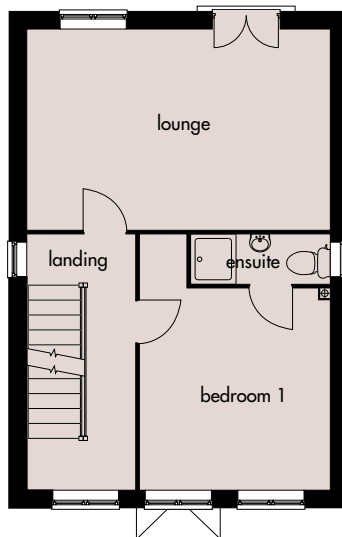


### Ground Floor

Kitchen: 3510mm x 2360mm  
11'6" x 7'9"

Dining/  
Family room: 5015mm x 3315mm (max)  
16'5" x 10'9" (max)

Study: 2950mm x 2015mm  
9'8" x 6'7"

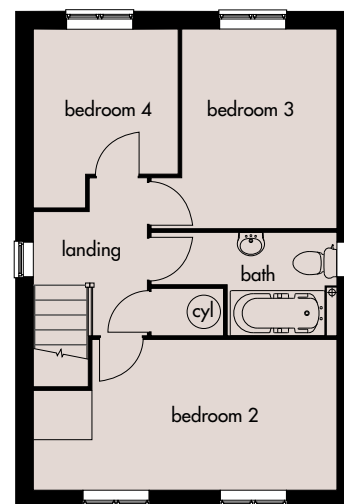


### First Floor

Lounge: 5325mm x 3510mm  
17'5" x 11'6"

Bedroom 1: 3545mm x 3355mm(max)  
11'7" x 11'0" (max)

Ensuite: 2430mm x 864mm  
7'11" x 2'10"



### Second Floor

Bedroom 2: 5325mm x 2630mm  
17'5" x 8'8"

Bedroom 3: 3495mm x 2705mm  
11'6" x 8'10"

Bedroom 4: 3130mm x 2520mm  
10'3" x 8'3"

Broseley Homes Limited, Investor House,  
Colima Ave, Sunderland Enterprise Park,  
Tyne & Wear SR5 3XB  
Tel: 0191 5370980  
[www.broseley-homes.co.uk](http://www.broseley-homes.co.uk)



Type 421 (13-01-06)

Broseley Homes Limited, Falcon House,  
Preston Farm Park,  
Stockton-on-Tees TS17 3TS  
Tel: 01642 499700  
[www.broseley-homes.co.uk](http://www.broseley-homes.co.uk)