

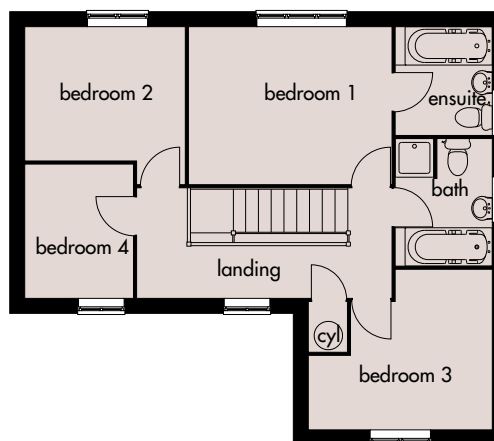
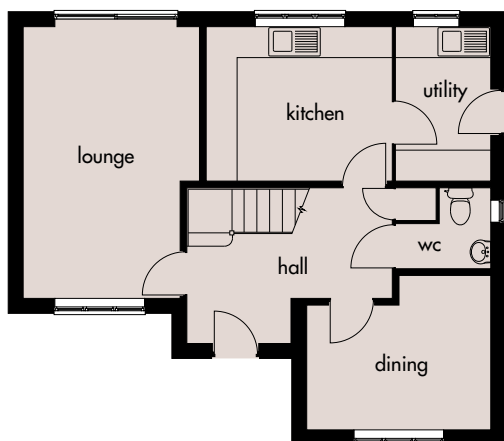
# Rockwell

*Setting the  
standard...*



## A four bedroomed detached house.

An elegantly designed home, including entrance hall, downstairs cloakroom, lounge, dining room, kitchen, utility, bathroom and en-suite to master bedroom.



### Ground Floor

Lounge: 5250mm x 3400mm  
17'2" x 11'1"

Kitchen: 3570mm x 2975mm(max)  
11'8" x 9'9" (max)

Utility: 2975mm x 1830mm  
9'9" x 6'0"

Dining: 3550mm x 2975mm  
11'7" x 9'9"

### First Floor

Bedroom 1: 3910mm x 3025mm(max)  
12'9" x 9'11" (max)

Bedroom 2: 3085mm x 3025mm  
10'1" x 9'11"

Bedroom 3: 3550mm x 3035mm(max)  
11'7" x 9'11" (max)

Bedroom 4: 2575mm x 2080mm  
8'5" x 6'9"

Ensuite: 2080mm x 1855mm  
6'9" x 6'1"

Broseley Homes Limited, Investor House,  
Colima Ave, Sunderland Enterprise Park,  
Tyne & Wear SR5 3XB  
Tel: 0191 5370980  
[www.broseley-homes.co.uk](http://www.broseley-homes.co.uk)



Broseley Homes Limited, Falcon House,  
Preston Farm Park,  
Stockton-on-Tees TS17 3TS  
Tel: 01642 499700  
[www.broseley-homes.co.uk](http://www.broseley-homes.co.uk)

Type 416 (13-01-06)