

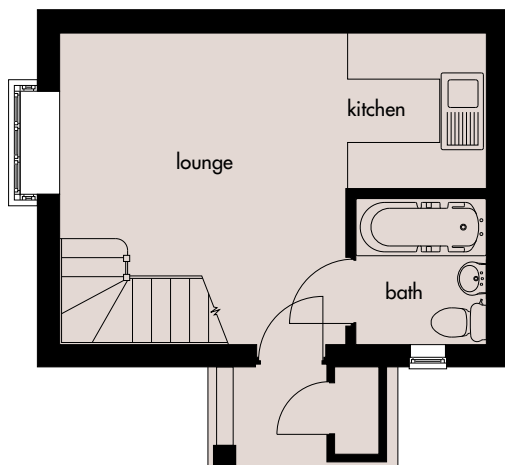
Puma

Building the future...



A one bed roomed mews house.

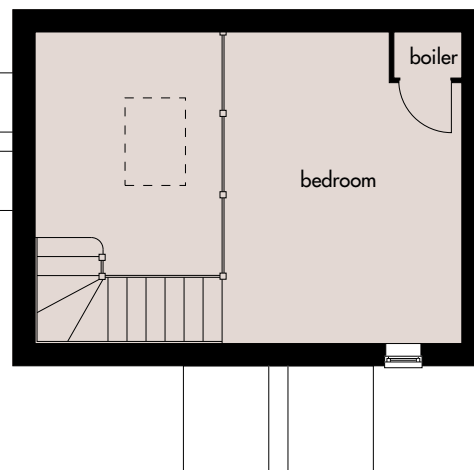
An elegantly designed home, including downstairs bathroom, lounge/kitchen and master bedroom.



Ground Floor

Lounge: 4030mm x 3680mm(max)
13'2" x 12'0"(max)

Kitchen area: 2030mm x 1830mm
6'7" x 6'0"



First Floor

Bedroom 1: 4030mm x 3050mm(max)
13'2" x 10'0"(max)

Broseley Homes Limited, Investor House,
Colima Ave, Sunderland Enterprise Park,
Tyne & Wear SR5 3XB
Tel: 0191 5370980
www.broseley-homes.co.uk



Type 135 (13-01-06)

Broseley Homes Limited, Falcon House,
Preston Farm Park,
Stockton-on-Tees TS17 3TS
Tel: 01642 499700
www.broseley-homes.co.uk