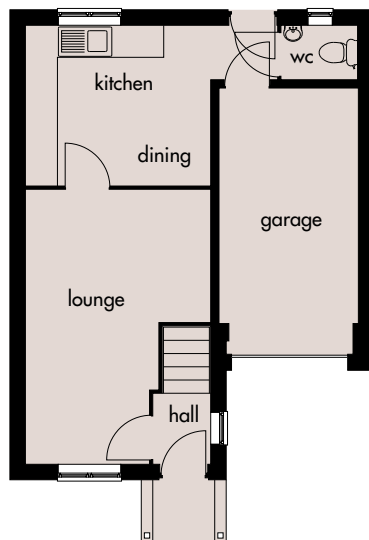


Lancaster

*Designs for
living...*

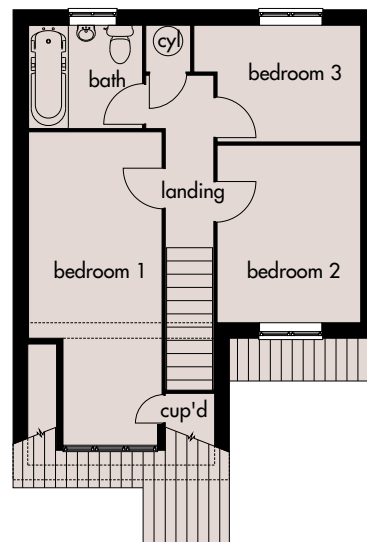


A three bedroomed semi-detached or mews house.
An elegantly designed home, including integral garage, entrance hall, downstairs cloakroom, lounge, dining/kitchen and bathroom.



Ground Floor

Lounge: 5105mm x 3450mm(max)
16'8" x 11'3"(max)
Kitchen/Dining: 3450mm x 2995mm
11'3" x 9'9"



First Floor

Bedroom 1: 5885mm x 2445mm(max)
19'3" x 8'0"(max)
Bedroom 2: 3270mm x 2640mm
10'8" x 8'7"
Bedroom 3: 3070mm x 2180mm(max)
10'0" x 7'1"(max)

Broseley Homes Limited, Investor House,
Colima Ave, Sunderland Enterprise Park,
Tyne & Wear SR5 3XB
Tel: 0191 5370980
www.broseley-homes.co.uk



Type 368 (13-01-06)

Broseley Homes Limited, Falcon House,
Preston Farm Park,
Stockton-on-Tees TS17 3TS
Tel: 01642 499700
www.broseley-homes.co.uk