

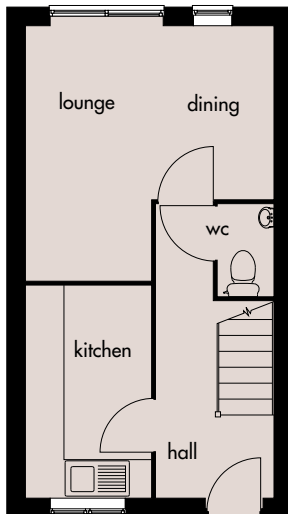
# Hurricane

*Designs for  
living...*



## **A two bedroomed semi-detached or mews house.**

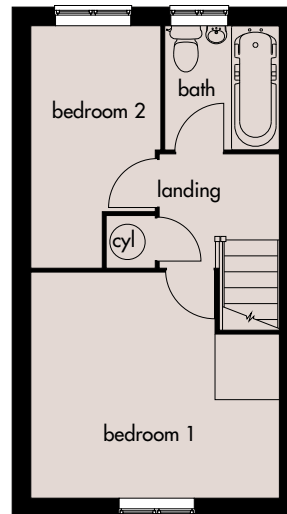
An elegantly designed home, including entrance hall, downstairs cloakroom, lounge/dining room, kitchen and bathroom.



### **Ground Floor**

Lounge/Dining: 3640mm x 3840mm(max)  
11'11" x 12'7"(max)

Kitchen: 3595mm x 1860mm  
11'9" x 6'1"



### **First Floor**

Bedroom 1: 3840mm x 3515mm(max)  
12'7" x 11'6"(max)

Bedroom 2: 3720mm x 1995mm(max)  
12'2" x 6'6"(max)

Broseley Homes Limited, Investor House,  
Colima Ave, Sunderland Enterprise Park,  
Tyne & Wear SR5 3XB  
Tel: 0191 5370980  
[www.broseley-homes.co.uk](http://www.broseley-homes.co.uk)



Type 259 (13-01-06)

Broseley Homes Limited, Falcon House,  
Preston Farm Park,  
Stockton-on-Tees TS17 3TS  
Tel: 01642 499700  
[www.broseley-homes.co.uk](http://www.broseley-homes.co.uk)