

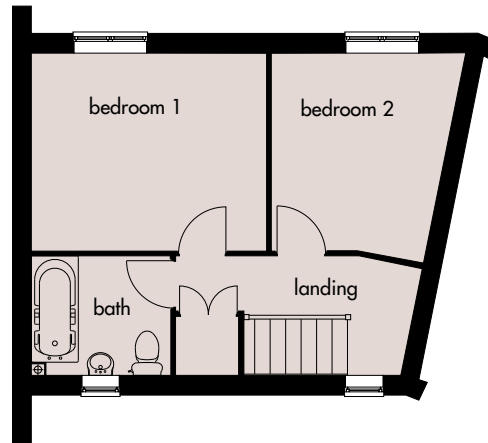
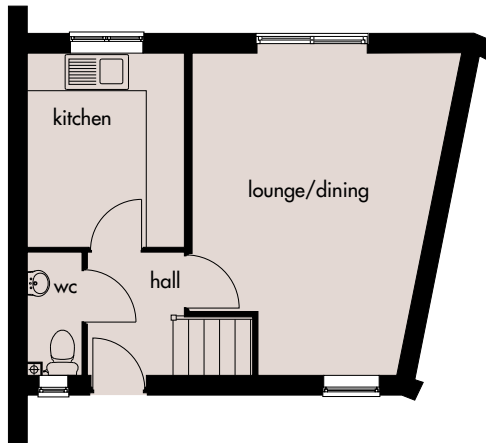
# Hornet

*Quality with style...*



## A two bedroomed mews house.

An elegantly designed home, including entrance hall, downstairs cloakroom, lounge/dining room, kitchen and bathroom.



### Ground Floor

Lounge/Dining: 4270mm x 5120mm  
14'0" x 16'9"

Kitchen: 2480mm x 3080mm  
8'1" x 10'1"

### First Floor

Bedroom 1: 3760mm x 3130mm  
12'4" x 10'3"

Bedroom 2: 3040mm x 3130mm  
9'11" x 10'3"

Broseley Homes Limited, Investor House,  
Colima Ave, Sunderland Enterprise Park,  
Tyne & Wear SR5 3XB  
Tel: 0191 5370980  
[www.broseley-homes.co.uk](http://www.broseley-homes.co.uk)



Type 271 (13-01-06)

Broseley Homes Limited, Falcon House,  
Preston Farm Park,  
Stockton-on-Tees TS17 3TS  
Tel: 01642 499700  
[www.broseley-homes.co.uk](http://www.broseley-homes.co.uk)