

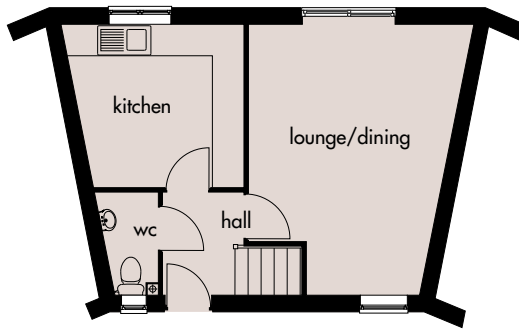
Heron

*Builders for
generations...*



A two bedroomed mews house.

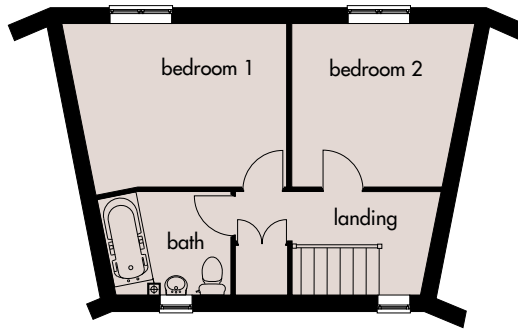
An elegantly designed home, including entrance hall, downstairs cloakroom, lounge/dining room, kitchen and bathroom.



Ground Floor

Lounge/Dining: 4205mm x 5120mm
13'9" x 16'9"

Kitchen: 3450mm x 3080mm
11'3" x 10'1"



First Floor

Bedroom 1: 3080mm x 4250mm
10'1" x 13'11"

Bedroom 2: 3080mm x 3450mm
10'1" x 11'3"

Broseley Homes Limited, Investor House,
Colima Ave, Sunderland Enterprise Park,
Tyne & Wear SR5 3XB
Tel: 0191 5370980
www.broseley-homes.co.uk



Type 272 (13-01-06)

Broseley Homes Limited, Falcon House,
Preston Farm Park,
Stockton-on-Tees TS17 3TS
Tel: 01642 499700
www.broseley-homes.co.uk