

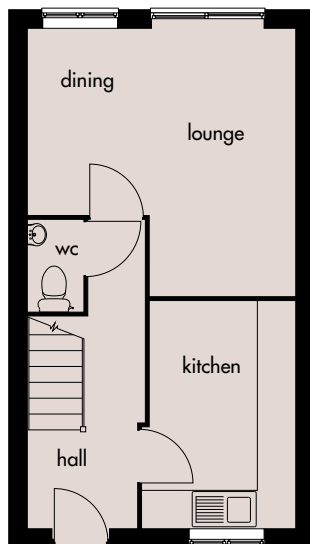
# Dove

*Building  
excellence...*



## **A three bedroomed semi-detached house.**

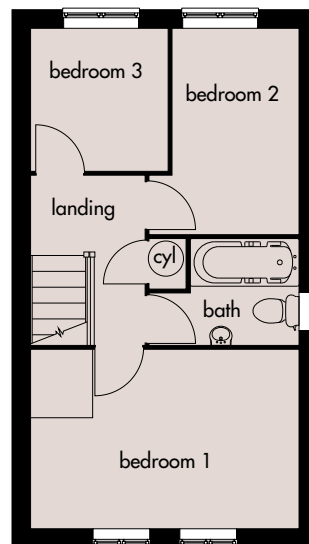
An elegantly designed home, including entrance hall, downstairs cloakroom, lounge, dining room, kitchen and bathroom.



### **Ground Floor**

Lounge/Dining: 4105mm x 4165mm(max)  
13'5" x 13'7"(max)

Kitchen: 3595mm x 2285mm  
11'9" x 7'5"



### **First Floor**

Bedroom 1: 4165mm x 2765mm  
13'7" x 9'0"

Bedroom 2: 3180mm x 1970mm  
10'5" x 6'5"

Bedroom 3: 2230mm x 2100mm  
7'3" x 6'10"

Broseley Homes Limited, Investor House,  
Colima Ave, Sunderland Enterprise Park,  
Tyne & Wear SR5 3XB  
Tel: 0191 5370980  
[www.broseley-homes.co.uk](http://www.broseley-homes.co.uk)



Type 365 (13-01-06)

Broseley Homes Limited, Falcon House,  
Preston Farm Park,  
Stockton-on-Tees TS17 3TS  
Tel: 01642 499700  
[www.broseley-homes.co.uk](http://www.broseley-homes.co.uk)