

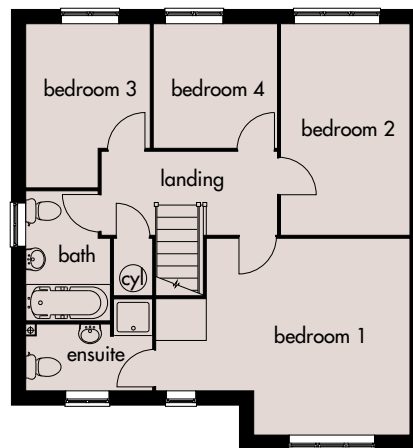
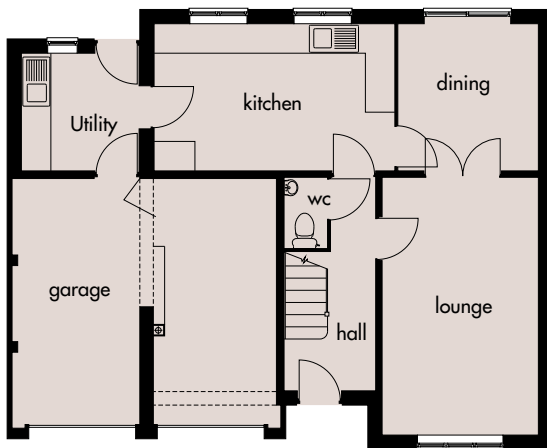
Comet

*Building
excellence...*



A four bedroomed detached house.

An elegantly designed home, including double integral garage, entrance hall, downstairs cloakroom, lounge, dining room, kitchen, utility, bathroom and en-suite to master bedroom.



Ground Floor

Lounge:	5225mm x 3115mm 17'1" x 10'2"
Kitchen:	2975mm x 4870mm(max) 9'9" x 15'11" (max)
Utility:	2375mm x 2350mm 7'9" x 7'8"
Dining:	2975mm x 2830mm 9'9" x 9'3"

First Floor

Bedroom 1:	5160mm x 3960mm(max) 16'11" x 12'11" (max)
Bedroom 2:	4290mm x 2590mm 14'0" x 8'5"
Bedroom 3:	3285mm x 2530mm(max) 10'9" x 8'3" (max)
Bedroom 4:	2480mm x 2490mm 8'1" x 8'2"
Ensuite:	2540mm x 1315mm 8'4" x 4'3"

Broseley Homes Limited, Investor House,
Colima Ave, Sunderland Enterprise Park,
Tyne & Wear SR5 3XB
Tel: 0191 5370980
www.broseley-homes.co.uk



Broseley Homes Limited, Falcon House,
Preston Farm Park,
Stockton-on-Tees TS17 3TS
Tel: 01642 499700
www.broseley-homes.co.uk

Type 413 (13-01-06)