

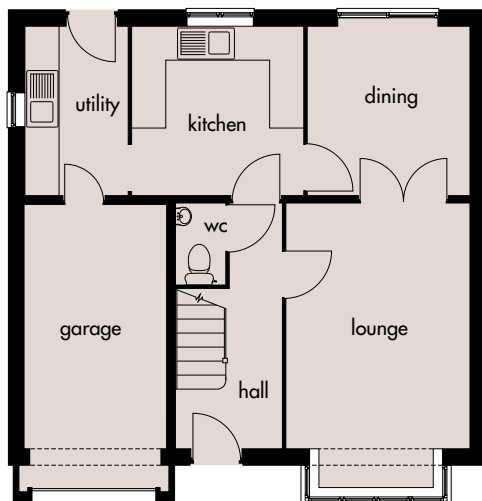
Blenheim

*Building for
Generations...*



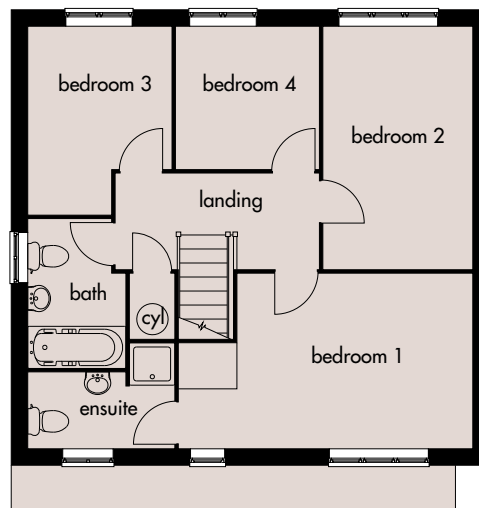
A four bedroomed detached house.

An elegantly designed home, including integral garage, entrance hall, downstairs cloakroom, lounge, dining room, kitchen, utility, bathroom and en-suite to master bedroom.



Ground Floor

Lounge:	4325mm(+bay) x 3150mm 14'2"(+bay) x 10'4"
Dining:	2980mm x 2815mm 9'9" x 9'2"
Kitchen:	3015mm x 2980mm 9'10" x 9'9"
Utility:	2980mm x 1770mm 9'9" x 5'9"



First Floor

Bedroom 1:	5160mm x 2970mm(max) 16'11" x 9'8" (max)
Bedroom 2:	4290mm x 2590mm 14'0" x 8'5"
Bedroom 3:	3285mm x 2530mm(max) 10'9" x 8'3" (max)
Bedroom 4:	2490mm x 2480mm 8'2" x 8'1"
Ensuite:	2540mm x 1970mm(max) 8'4" x 6'5"(max)

Broseley Homes Limited, Investor House,
Colima Ave, Sunderland Enterprise Park,
Tyne & Wear SR5 3XB
Tel: 0191 5370980
www.broseley-homes.co.uk



Broseley Homes Limited, Falcon House,
Preston Farm Park,
Stockton-on-Tees TS17 3TS
Tel: 01642 499700
www.broseley-homes.co.uk

Type 412 (13-01-06)